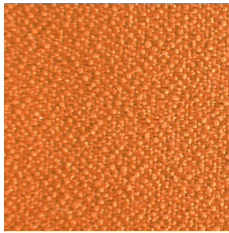
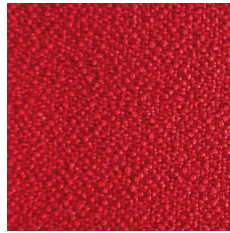


## Cat. 1

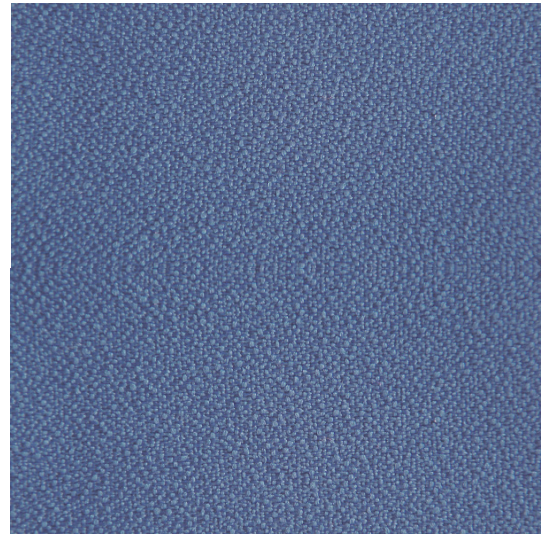
---



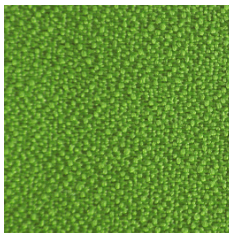
GE3



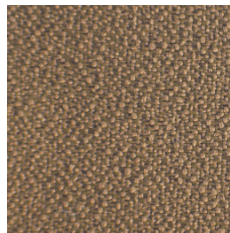
GF5



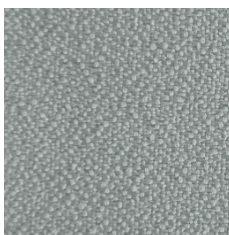
GF6



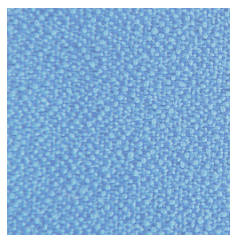
GE8



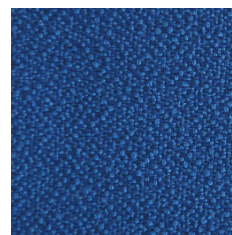
GE7



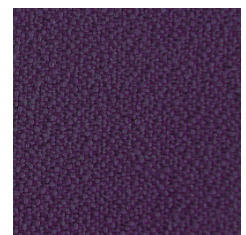
GE2



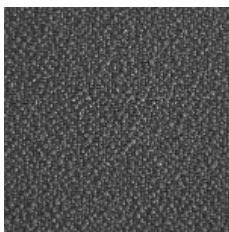
GE6



GE4



GE5



GE9



GE1

# Bondai



EN

Certified to OEKO-TEX® Standard 100

## Composition

100% Polyester

## Weight

250 g/m<sup>2</sup>

## Abrasion resistance

150.000 Martindale cycles

## Flammability

BS EN 1021-1 (cigarette)  
BS EN 1021-2 (match)  
BS 5852: part 2 (Crib 5)  
BS 7176 Medium Hazard  
CAL TB 117  
EN 13501-1, B-s1, d0 (adhered)  
UNI 9175 & UNI 9175/FA1 Classe 1 IM

## Light fastness

6 (EN ISO 105-B02)

## Fastness to rubbing

wet: 5; dry: 5 (ISO 105-X12)

FR

Certifié conforme à la norme  
OEKO-TEX® 100

## Composition

100% Polyester

## Poids

250 g/m<sup>2</sup>

## Résistance à l'abrasion

150.000 Cycles de Martindale

## Inflammabilité

BS EN 1021-1 (cigarette)  
BS EN 1021-2 (allumette)  
BS 5852: part 2 (Crib 5)  
BS 7176 Medium Hazard  
CAL TB 117  
EN 13501-1, B-s1, d0 (collé)  
UNI 9175 & UNI 9175/FA1 Classe 1 IM

## Stabilité à la lumière

6 (EN ISO 105-B02)

## Résistance au frottement

humide: 5; sec: 5 (ISO 105-X12)

DE

Zertifiziert gemäß OEKO-TEX®  
Standard 100

## Zusammensetzung

100% Polyester

## Gewicht

250 g/m<sup>2</sup>

## Abriebfestigkeit

150.000 Martindale-Zyklen

## Entflammbarkeit

BS EN 1021-1 (Zigarette)  
BS EN 1021-2 (Streichholz)  
BS 5852: part 2 (Crib 5)  
BS 7176 Medium Hazard  
CAL TB 117  
EN 13501-1, B-s1, d0 (anhaftend)  
UNI 9175 & UNI 9175/FA1 Classe 1 IM

## Lichtgeschwindigkeit

6 (EN ISO 105-B02)

## Reibechtheit

nass: 5; trocken: 5 (ISO 105-X12)

!

Batch to batch variations in shade may occur within commercial tolerances.

!

Des variations de teinte d'un lot à l'autre peuvent se produire dans le cadre des tolérances commerciales.

!

Innerhalb der handelsüblichen Toleranzen können Farbabweichungen von Charge zu Charge auftreten.