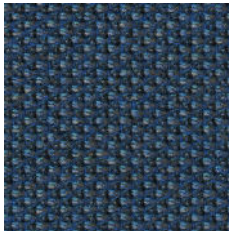
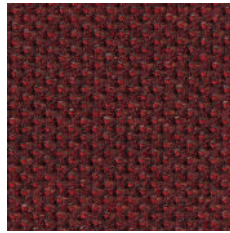


## Cat.3

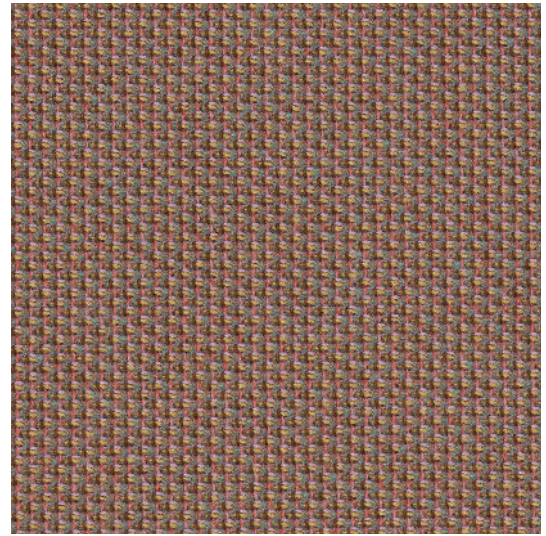
---



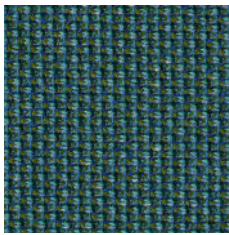
\*2501 TA5



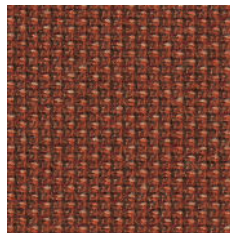
\*2801 TB5



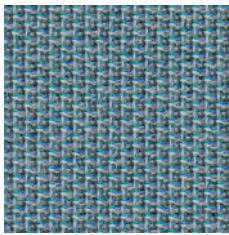
\*1201 LN9



\*2601 TA7



\*2201 TB4



\*2401 TA4



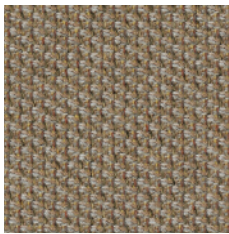
\*1102 TB2



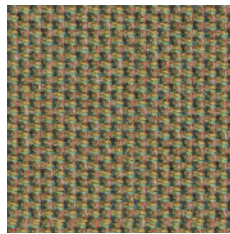
\*2301 TB1



\*2502 TA6



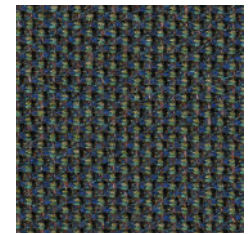
\*2001 TB3



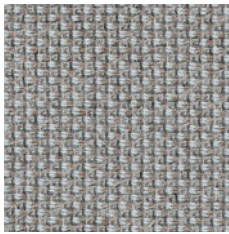
\*1701 LS2



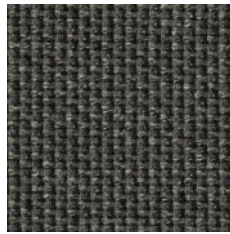
\*1302 TA9



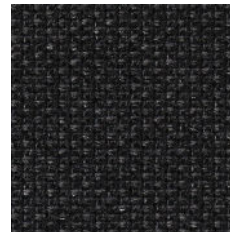
\*1803 TA8



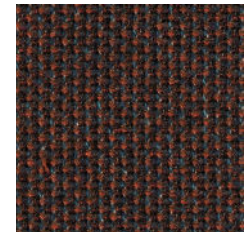
\*1901 TA3



\*2901 TA2



\*3101 TA1



\*1501 TB6



EN

Certified to OEKO-TEX® Standard 100

Certified to the EU Ecolabel

### Composition

100% post-consumer recycled polyester

### Weight

407 g/m<sup>2</sup>

### Abrasion resistance

120.000 Martindale cycles

### Flammability

BS EN 1021-1 (cigarette)

BS EN 1021-2 (match)

CAL TB 117

### Light fastness

7-8 (EN ISO 105-B02)

### Fastness to rubbing

wet: 4-5; dry: 4-5 (ISO 105-X12)

FR

Certifié conforme à la norme  
OEKO-TEX® 100

Certifié conforme à l'écolabel européen

### Composition

Polyester recyclé 100 % après utilisation

### Poids

407 g/m<sup>2</sup>

### Résistance à l'abrasion

120.000 Cycles de Martindale

### Inflammabilité

BS EN 1021-1 (cigarette)

BS EN 1021- 2 (allumette)

CAL TB 117

### Stabilité à la lumière

7-8 (EN ISO 105-B02)

### Résistance au frottement

humide: 4-5; sec: 4-5 (ISO 105-X12)

DE

Zertifiziert gemäß OEKO-TEX®  
Standard 100

Zertifiziert nach EU Ecolabel

### Zusammensetzung

Nach der Nutzung 100 % recyceltes  
Polyester

### Gewicht

407 g/m<sup>2</sup>

### Abriebfestigkeit

120.000 Martindale-Zyklen

### Entflammbarkeit

BS EN 1021-1 (Zigarette)

BS EN 1021-2 (Streichholz)

CAL TB 117

### Lichtgeschwindigkeit

7-8 (EN ISO 105-B02)

### Reibechtheit

nass: 4-5; trocken: 4-5 (ISO 105-X12)

!

Batch to batch variations in shade may occur within commercial tolerances.

!

Des variations de teinte d'un lot à l'autre peuvent se produire dans le cadre des tolérances commerciales.

!

Innerhalb der handelsüblichen Toleranzen können Farbabweichungen von Charge zu Charge auftreten.